



**2019 J/24 East Coast Championship
J/70 Fall Series**
Sailing Instructions
October 4 - 6, 2019



Organizing Authority: Severn Sailing Association, J/24 Fleet 8 & J/70 Fleet 1
Severn Sailing Association, 311 First Street, Annapolis, Maryland 21403
(410) 268-8744

The notation (DP) in a rule in the sailing instructions (SI) or notice of race means that the penalty for the breach of that rule may, at the discretion of the protest committee, be less than disqualification. This changes RRS 60.1(a).

1 RULES

- 1.1 The regatta will be governed by the rules as defined in *The Racing Rules of Sailing* (RRS) and the appropriate J Class rules.
- 1.2 If there is a conflict between the Notice of Race (NOR) and these Sailing Instructions (SI), the SI will take precedence. This changes RRS 63.7.

2 NOTICES TO COMPETITORS

- 2.1 Notices to competitors will be posted on the regatta notice board located at SSA.

3 CHANGES IN SAILING INSTRUCTIONS

- 3.1 Changes to the sailing instructions on land will be posted by 0930 each day.
- 3.2 For on-the-water changes to the sailing instructions, the change will be announced by the Race Committee (RC) verbally. This changes RRS 90.2 and Race Signals.

4 SIGNALS MADE ASHORE

- 4.1 Signals made ashore will be displayed from the flagstaff on the deck of SSA.
- 4.2 When flag AP is displayed ashore, "1 minute" is replaced with "not less than 60 minutes" in RRS 'Race Signals'.

5 SCHEDULE OF RACES

- 5.1 Schedule of racing is as follows:
 - Friday October 4th, 1100 Warning Signal J-24's only
 - Saturday October 5, 1100 Warning Signal both J-24's & J-70's racing
 - Sunday Oct. 6, 1000 Warning Signal both J-24's & J-70's racing
- 5.2 Nine races are scheduled for the J/24s. Seven races are scheduled for the J/70's
- 5.3 Any number of races may be sailed each day. Races not completed by the end of the last day of racing will not be sailed.
- 5.4 No warning signal will be made after 1500 on Sunday, October 6.

6 CLASS FLAG

- 6.1 The class flag will be a flag displaying the 'J/24' logo or the 'J/70' logo.

7 RACING AREA

- 7.1 Attachment A shows the location of the racing area.

8 CHECK-IN, CHECK-OUT

- 8.1 (DP) Before the warning signal of the first race each day, each boat shall sail on

starboard tack past the stern of the signal boat prior to the warning signal and hail her sail number until acknowledged by the Race Committee.

- 8.2 (DP) A boat that retires from a race, or does not intend to compete, shall make a reasonable attempt to notify the Race Committee as soon as possible (VHF Channel 68 may be used).

9 THE COURSES

- 9.1 The courses will be windward/leeward as shown in Attachment A. The Race Committee will designate the course by placards with numbers on them.
- 9.2 An offset mark may be used in conjunction with Mark 1.
- 9.3 Mark 2 may be a gate consisting of two marks. If only one mark is present, it should be rounded to port.
- 9.4 No later than the warning signal the race committee signal boat will display the course and approximate compass bearing for the first leg from the starting line to Mark 1.

10 MARKS

- 10.1 Rounding marks are orange cylinders or spheres.
- 10.2 Change marks will be orange tetrahedrons.
- 10.3 The starting line will be between an orange flag on the signal boat and an orange flag on a pin boat or a yellow cylinder.
- 10.4 The finishing line will be between a blue flag on a race committee boat and a yellow (or orange) cylinder.

11 THE START

- 11.1 Races will be started using RRS 26.
- 11.2 Recalls – After the starting signal, the Race Committee may announce the sail or bow number of the recalled boat(s) on VHF channel 68. Failure of a boat to hear the recall broadcast, a boat's position in the sequence of broadcast numbers, and failure of the Race Committee to broadcast any numbers shall not be grounds for granting redress (this changes RRS 62.1(a))
- 11.3 When RRS 30.3 (Black Flag Rule) is in effect, the Race Committee may announce the sail number of the boats that have broken RRS 30.3 via VHF channel 68.
- 11.4 If flag U has been displayed as the preparatory signal, no part of a boat's hull, crew, or equipment shall be in the triangle formed by the ends of the starting line and the first mark during the last minute before her starting signal. If a boat breaks this rule and is identified, she shall be disqualified without a hearing but not if the race is restarted or resailed. When the U flag is used as the preparatory signal, RRS 29.1 does not apply.

12 CHANGE OF THE NEXT LEG OF THE COURSE

- 12.1 To change the next leg of the course, the Race Committee will lay a new mark (or move the finishing line). The new mark will be a tetrahedron. When, in a subsequent change of course, a new mark is replaced, it will be replaced with an original mark. This changes RRS 33(C).

13 TIME LIMITS

- 13.1 If no boat passes mark 1 for the first time within 30 minutes after the start, the race will be abandoned.
- 13.2 If no boat finishes within 90 minutes, the race will be abandoned.
- 13.3 Boats racing 20 minutes after the first boat finishes, and not thereafter retiring, being disqualified, or given redress, will be scored Time Limit Expired (TLE), see SI 16.3, and should proceed to the starting area if another race is scheduled.

14 PENALTY SYSTEM

- 14.1 A boat breaking a rule of Part 2 of the RRS may take a 20% penalty (instead of two turns) by flying a yellow flag (at the time of the incident and until finishing) and then informing the RC at the finish of that race.
- 14.2 A boat may take a Post-Race Penalty of 40% by informing the RC in writing before the beginning of a hearing involving the incident

15 PROTESTS AND ARBITRATION

- 15.1 Protest forms are available on the Official Notice Board. Protests shall be delivered at the protest desk within the protest time limit.
- 15.2 The protest time limit is 60 minutes after the race committee signal boat docks after the last race of the day. The RC will post the docking time on the Official Notice Board.
- 15.3 The Race Committee will post a list of penalties being assigned by the Race Committee prior to the end of protest time limit. The deadline for requesting redress based on these scores will be either 30 minutes after posting of the penalty notice or the protest time limit, whichever is later.
- 15.4 The scheduled times and locations of hearings will be posted as soon as practical but no later than 30 minutes after the protest time limit.
- 15.5 Arbitration may be used prior to the protest hearing for incidents involving the rules of Part 2 or RRS 31.

16 SCORING

- 16.1 One races constitutes a regatta.
- 16.2 Each boat's series score shall be the total of her race scores. This changes RRS A2.
- 16.3 The score (prior to application of other penalties) of boats scored TLE will be points equal to the number of boats finishing within the time limit plus one point by the Race Committee without a hearing. This changes RRS A4.2, A5, and A11.

17 REPLACEMENT OF CREW OR EQUIPMENT – J-24's only

- 17.1 Crew substitutions must be declared at Registration/Check-in by filling out Crew Substitution form and submitting it with Registration materials. Any later changes must be approved by the Regatta Chair and posted on the Official Notice Board by 0900 on the day of racing.
- 17.2 J-24 class rule C.10.2 is amended to include class rule J.2 allowing an extra spinnaker to be carried while racing.

18 TRASH DISPOSAL

- 18.1 Boats shall not put trash or recyclable material in the water. Trash shall be kept aboard and shall be deposited in a trash or recycling receptacle on shore.

19 HAUL-OUT RESTRICTIONS – J-24's only

- 19.1 J-24's shall be afloat by 0945 Friday morning.
- 19.2 J-24's shall not be hauled out during the regatta except with and according to the terms of prior written permission of the Race Committee.

21 COMMERCIAL TRAFFIC

- 21.1 (DP) A boat may not exercise right of way, cross in proximity to, or interfere with the reasonable transit of commercial ships, tugs, or barges. Boats must take evasive action well in advance of a potentially dangerous situation.

22 PRIZES

- 22.1 The winning helmsperson of the J-24 regatta will be named the 2019 J/24 East Coast Champion, and will also claim the ECC 2020 worlds berth. The winning helmsperson of the J-70 regatta will be named the 2019 Fall Series winner.
- 22.2 Prizes will be awarded to the top five J/24 boats overall & top three J/70 boats.

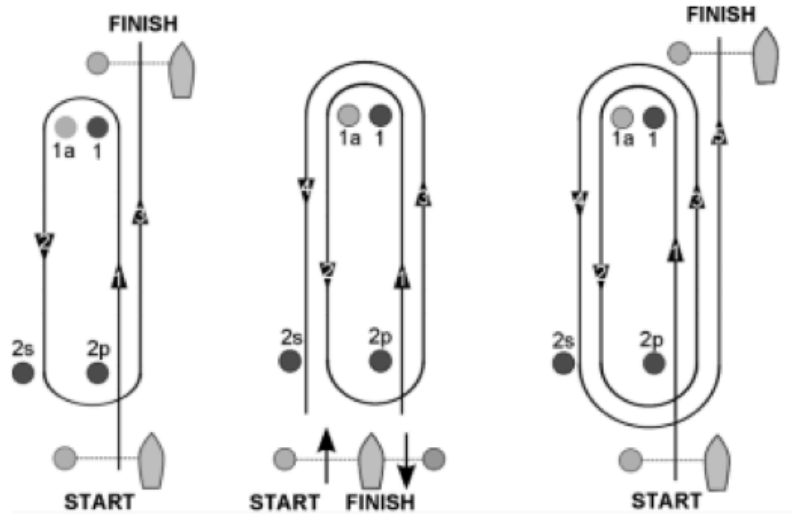
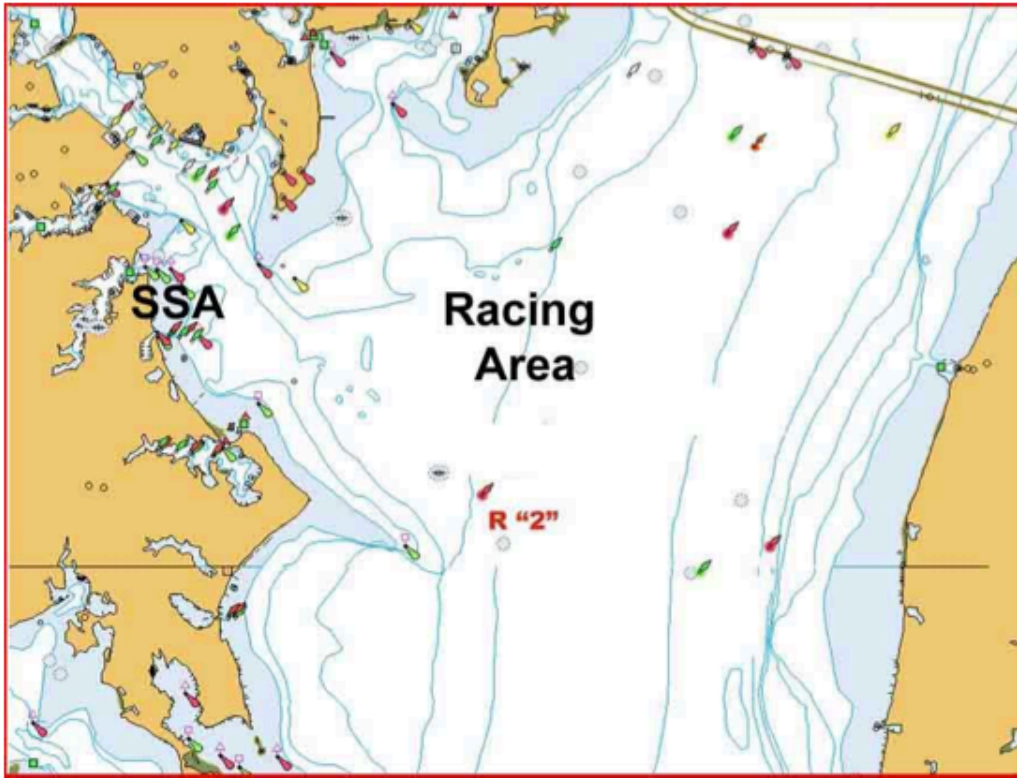
23 MEDIA AND TELEVISION

- 23.1 Competitors give absolute right and permission for any photograph and video footage taken of themselves or the boat they are sailing during the event, to be published in any media whatsoever, for either editorial or advertising purposes or to be used in press information.

24 DISCLAIMER OF LIABILITY

- 24.1 Competitors participate in the regatta entirely at their own risk. See RRS 4 (Decision to Race Rule). The Organizing Authority will not accept any liability for material damage or personal injury or death sustained in conjunction with or prior to, during, or after the regatta.

ATTACHMENT A - RACING AREA LOCATION



“3”

“4”

“5”

Course 3: Start, 1, 1a, 2s/2p, Finish Upwind

Course 4: Start, 1, 1a, 2s/2p, 1, 1a, Finish Downwind

Course 5: Start, 1, 1a, 2s/2p, 1, 1a, 2s/2p, Finish Upwind